



En Plein Air Painting Norfolk Island

with Sylvia Ditchburn

Watawieh from Norfolk Island!

Thank you for your enquiry regarding En Plein Air painting with Sylvia Ditchburn. In this document you'll find information and prices for our holiday package, followed by other important travel information. Please also see the separately attached Insurance information and Reservation Form.

Please note that final prices will not be available until airline seats come into booking range, when this document will be updated. However, our indicative pricing is a good approximation as to what the final price will be. Our package prices are based on bulk purchase airfares. These fares have conditions that include final payment being completed no later than 90 days prior to travel.

Qantas now operates direct flights ex Brisbane and Sydney to Norfolk Island. We have a couple of booking options available to you:

1. Bulk purchase airfares: Only \$250pp required to secure your spot

We have secured a specially discounted bulk allotment of airfares for this event. To secure a spot at the prices shown within this info pack a deposit of \$250 per person is due upon booking. Spaces are limited and will be sold on a first in first served basis. We strongly recommend you, and your family/friends/club members to consider this option. [Note: these prices are based on us receiving booking requests for min. 10 passengers by 26 June 2023 in line with Qantas bulk seats booking terms. **Please note: should we not reach a min. of 10 passengers, prices will be reviewed.**

2. Booking after 26 June 2023 date: Deposit increases to \$1000pp upon booking + package prices may change

After 26 June 2023 bulk airfare prices will no longer be available unless you have a group of minimum 10 family, friends or club members booking as part of your travel party. We have the ability to hold another bulk booking for your party [Prices will be reviewed and subject to change at time of booking]. If you book individually/less than 10 passengers, we will process your booking on an instant purchase airfare based on the best airfare available at the time of booking. Please note it is likely the fare component will increase (as booking closer to travel/or as the flight fills, airlines naturally increase the price of the remaining seats). A non-refundable deposit will be confirmed to you at time of booking (minimum of \$1000 per person, this may increase subject to airfare availability). The following package prices should be used as a guide, they are indicative prices as airfare surcharges may apply on top of the following prices should airfare availability become more limited and only available at a higher price.

When you are ready to make a booking you can do this by completing the attached Reservation Form and payment of the non-refundable, please read important information inside regarding conditions and cancellation penalties. You can send the reservation form via email, fax on 0011 6723 23205, or alternatively complete your booking [online via our website utilising this secure booking form link](#)

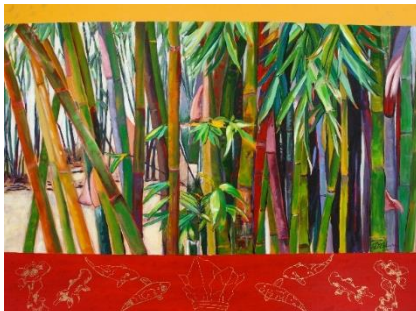
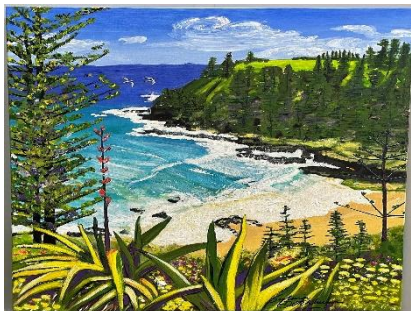
Please let me know if you have any questions or need further information. I look forward to helping you make your bookings to join us on Norfolk Island for a fabulous holiday and Sylvia Ditchburn.

Kind regards

Cici

Cici Wen and all at Norfolk Island Travel Centre

About Dr Sylvia Ditchburn.....



Dr Sylvia Ditchburn is well known for her vibrant tropical and desert Australian landscapes.

Exhibiting for more than 40 years with over 55 solo shows throughout Australia and many group shows internationally in Russia, China, France, Italy, New York and Budapest.

Sylvia is formally trained in fine art, and has over 50 art awards and commendations. Her work is held in public and private collections.

Working mostly en plein air, crisscrossing Australia in search of subjects for her paintings, Sylvia's art reflects the ambience of natural environments and sense of place.

Materials List *with Sylvia Ditchburn*

Norfolk Island Travel Centre will provide each art student with:

1 x small folding stool, 1 x art board, 1 x water bottle (to carry water for washing brushes etc), 1 x Jar for cleaning equipment, 1 x Drop sheet

Please note: There are no art supplies available on Norfolk Island, & the Tutor does not carry any extra art supplies for selling.

Field Work (en plein air):

* Hat, sunscreen, personal insect repellent, water, portable stool & easel, sketch book, Artline calligraphy pens size 2.0, pastels, crayons or Aqua coloured pencils for colour notes, small **digital** camera for taking reference photos or iphone. If you have an ipad it is very useful for this. Depending on the weather most of our time will be in the field. A studio is available to work in if the weather is inclement. Bring photos of your recent paintings.

Surfaces:

*Stretched canvases minimum size 46 x 61cm clean edge and preferably deep sided. Canvases to be primed with at least 3 coats of white gesso. Have 3 canvases available. **Note:** canvas size is approximate. If you prefer to work on a smaller size canvas please bring prepared sizes.*If you would like to work on paper bring full sheet 350 gsm medium texture watercolour sheets 56 x 78cm e.g. Arches or Saunders brands. Have 3 sheets available. A board to clip the paper to, this can be corflute and large clothes pegs are great to hold paper as they don't leave rust marks or grooves. You will not be stretching the paper e.g. as for watercolour medium. If you prefer to work on a smaller scale of half or quarter sheet please bring prepared sheets.

*Usual painting kit including the following:

Acrylic paints: artist quality (not student) e.g. Matisse, Infinity, Atelier

Basic paint colours + a few extras:

Black, White, Naples Yellow Light, Cobalt Blue pale, Ultramarine Blue, Phalo Blue, Violet, Dioxine Purple, Pyrrole Red, Magenta, Cad Yellow Medium, Lemon Yellow, Orange, Emerald Green, Chromium Oxide Green, Phalo Green/ Viridian, Terra Verte.

Colour Wheel: a small colour wheel as a guide to colour mixing. **This is essential.**

Mediums: Water based **Clear painting medium, Flow Control**, small bottle of liquid detergent.

Brushes: Usual brush kit. Useful to include 5cm household paint brush, flat cheap Eterna hog hair brushes Nos. 1,6,8,10, wash brush (25mm approx), smaller nylon brushes for detail e.g. liner brush size 0 – 1 (nylon available at craft stores), new tooth brush, cotton buds, palette knife (medium size), couple of plastic spoons and knives, soap or cleaning medium for cleaning brushes.

Other Stuff: Palette, can be large disposable sheets (NO TINY LIDS THANKYOU). A wet palette is good for acrylic because of its rapid drying time, use a damp cloth e.g. towel on a surface with baking paper on top. A large flat plastic or foil container with a cover is good for this. Water spray bottle to keep paints moist or use on painting, several medium containers for water for brushes, 4 smallish containers with lids for mediums and also to mix up a quantity of paint for blocking in, gladwrap, rags, painting apron.

MUST BRING: YOUR beautiful smile and sense of humour. Essential for you to **Paint in Norfolk Is** with Sylvia.



Experience Norfolk Island!

How can one small South Pacific Island contain so much diversity? Within a breathtakingly beautiful environment you can experience everything from snorkeling in turquoise waters over coral reefs to soaking up history in a World Heritage listed area and exploring a unique local culture.

Island History ...

From Polynesians, to convicts to the descendants of the Bounty mutineers.

There are museums, tours and spaces to just wander and soak up the stories. Kingston boasts the finest collection of Georgian architecture with an incredible array of houses, barracks and structures left from convict eras.

Island Food ...

Fresh, seasonal – and tasty!

Islanders have always lived off their locally grown produce. It's common to see restaurants advertising today's fishing catch on the menu, most likely served with vegetables harvested that morning.

Island Environment ...

Pristine, green and abundant.

Whether you are in the water, on a 4WD tour, enjoying a National Park walk or simply out and about, the beauty of our unspoilt environment surrounds you.

Flight Schedules

Flights subject to change

BRISBANE

Tuesday 26 March 2024 Brisbane to Norfolk Island Qantas flight QF 183

Departs Brisbane International Terminal 11.35am / Arrives Norfolk Island 3:45pm

Tuesday 02 April 2024 Norfolk Island to Brisbane Qantas flight QF 184

Departs Norfolk Island 4:45pm / Arrives Brisbane International Terminal 5:15pm



Prices are current today and subject to change without notice.

Holiday Package Inclusions

Holiday Package includes:

- ✓ Return economy class 'seat & bag' airfare Brisbane to Norfolk Island (**no meal on flight**)
- ✓ All pre-paid airline taxes
- ✓ Meet & greet at the Norfolk Island Airport & Accommodation
- ✓ Return airport transfers on Norfolk Island
- ✓ Seven night's accommodation (self-contained unit)
- ✓ Seven days car hire per unit (petrol is extra and payable direct whilst on the island)
- ✓ 5 x half day painting tuition at various beautiful locations on Norfolk Island (**Painter only**)
- ✓ Island Orientation Tour
- ✓ The Music Valley Experience
- ✓ Entry to Fletcher's Mutiny Cyclorama
- ✓ Devonshire Tea at Hilli Restaurant
- ✓ 2 Course Dinner at The Hilli Restaurant
- ✓ Discount Norfolk Shopping Card

ABN : 30 714 493 146



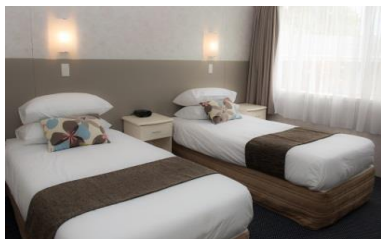
Address : PO Box 172, Norfolk Island 2899 / **Free Call** : (AUS) 1800 1400 66 / **Free Call** : (NZ) 0800 0088 10
P : (int) +6723 22502 / **F** : (int) +6723 23205 / **E** : travel@travelcentre.nf / www.norfolkislandtravelcentre.com

Accommodation






Aloha Apartments

Situated in Burnt Pine Township, Norfolk’s shopping and café district, these fully self-contained apartments offer the makings of a pleasant holiday with swimming pool, shaded BBQ area complete with modern gas BBQ’s and picnic tables, guest laundries, departure lounge, and reception office. With the bowling club, supermarket, cafes and restaurants literally a minute’s walk from the front entrance, Aloha Apartments are popular with those who want to be close to all the amenities while still being able to enjoy the peace and quiet of the private landscaped grounds.

STANDARD APARTMENTS



ADULT PACKAGE PRICES - 8 days / 7 nights

From: \$AU per person	 Two Bedroom Quad Share	 Two Bedroom Triple Share	 Two Bedroom Twin Share	 One Bedroom Twin Share	 One Bedroom Sole Use
Ex Brisbane – Painter	2889	3029	3119	2969	3669
Ex Brisbane – Non – painter	2589	2729	2819	2669	3369

Partners & friends are most welcome to attend.

Holiday package for partners & friends includes tours/meals in the above inclusions except the painting workshop - 5 x half day painting tuition

Please note prices are subject to minimum group number of 5 x painting travellers, the group bookings will not be booked until minimum number is met. Prices are indicative and will be confirmed once all aspects of the workshop are booked after meeting minimum numbers. All prices are current today, subject to availability and subject to change up until time of final payment and ticketing is completed.

Further information

IMPORTANT ADVICE FOR NORFOLK ISLAND:

While not mandatory, it is strongly recommended that you undertake a Rapid Antigen Test (RAT) for COVID-19 within 48 hours of departing and if this is positive do not travel to the Island. Norfolk Island has very limited health facilities compared with the mainland and particularly if you are elderly, unvaccinated or with a comorbidity and become infected with COVID-19 you will strain these facilities. Wearing a mask remains a very good protective measure particularly in in-door settings.

Conditions/Cancellation Penalties

Deposit and final payment

Package prices advertised are subject to availability at time of booking. **A \$250 non-refundable deposit per person is due upon booking and prior to 26 June 2023. Final payment is due by 27 December 2023.** In some cases air tickets will be issued within 24 hours of making the reservation. Airfare is subject to availability and non-refundable after issue. Tickets are non-transferable. Accommodation cancellation penalties apply within 90 days prior to travel. Within 60 days of travel, up to 100% cancellation fees may apply. We therefore strongly recommend travel insurance to protect you against some unforeseen cancellations.

Non-refundable deposits are taken on behalf of suppliers as assurance of payment for services we book for you as well as for the service we have undertaken on your behalf. There are many reasons why people decide to cancel traveling and in all cases deposits remain non-refundable.

Payment Options

Prices shown are in Australian dollars and are payable by personal or bank cheques or by direct deposit into our Commonwealth Bank account (please see bank details below). If you would prefer to pay by Visa or Mastercard, please add 1.5% to the total cost of your holiday package.

Bank Account Details

Direct deposits into our Commonwealth Bank account can be made at your local Commonwealth Bank or via online banking. Account details as follows...

Account Name: Wave Hospitality Group Pty Ltd – NITC Client Funds
BSB Number: 064 000
Account Number: 1435 5008

***Important* Please confirm amount and date of payment into our bank account when monies transferred.**

Tours on the Island

Norfolk Island has a great variety of tours available for you to enjoy. Norfolk Island Travel Centre is happy to assist with pre-booking your tour and dining requirements. As some tours have limited availability and because you're visiting during a busy period we strongly recommend pre-booking to avoid disappointment. Visit our website for our full independent list of tours and activities that Norfolk Island has to offer:

<https://www.norfolkislandtravelcentre.com/tours-activities> We will include a copy of our tour brochure within your travel documents, however if you wish to pre-book any of these popular activities in the meantime please let us know and we will book and confirm your place on the tours and activities for you.

Domestic Travel Insurance

Please make sure to open the separate Attachment regarding insurance for your trip. It is strongly recommended that passengers be covered by adequate travel insurance for protection against amendment or cancellation costs, travel delay, luggage, rental vehicle insurance excess and accidental death and personal liability. For the purposes of travel insurance Norfolk Island is deemed to be a domestic destination. However please bear in mind your destination is an island, which is subject to aircraft diversion in extreme weather conditions. **As airlines do not accept responsibility for flight delays or cancellations due to weather, passengers electing not to take travel insurance do so at their own risk for costs or losses sustained.**

Check-in

Flights depart from the international terminal at Sydney and Brisbane airports. Check-in is required two hours prior to the scheduled departure time.

Baggage Allowance

The above quotes are based on **Economy airfares**. Economy includes: checked baggage up to 30kgs which can be split across up to 2 pieces where the total dimensions for each piece must not exceed 158cm (62in). You can calculate the dimensions by adding together the width, height and depth of the piece of baggage. Cabin baggage must not exceed 1 piece, weighing a maximum of 7kgs per passenger. Qantas provides complimentary snack box and drinks.

Business class fares: Limited business class seats are available. Please contact us for a quote

- An additional 15 kg can be purchased by prepayment via Norfolk Island Travel Centre for \$50 per flight to/from the island. i.e. for a return flight to/from Norfolk Island the total cost is \$100 per piece/per person.
- QANTAS business class checked-in baggage allowance is 42kg which can be split across up to 3 pieces
- QANTAS Club members and Gold, Platinum and Platinum One Frequent flyers allowances [click here for the QF baggage calculator](#)
- Or alternatively the extra weight can be paid for at time of check-in, please note this will be at higher cost as airport excess baggage and/or heavy charges will apply at the airport for any pieces in excess of your checked baggage allowance regardless of Frequent Flyer status.
- Also note any piece of baggage that weighs over 32kg will be subject to a further overweight charge of approx. \$20 per kilo.
- Sporting equipment can be included as part of your checked baggage allowance (30kgs) subject to the sporting equipment requirements and size restrictions.

When travelling on domestic flights connecting to Norfolk Island flights

For those passengers booked on QANTAS thru-fares connecting via Sydney or Brisbane on the same day (no overnight stay):

1. For your in-bound flight, upon check in at the domestic terminal your luggage will be checked through to Norfolk Island and you will be provided with two boarding passes for domestic flights and your Sydney or Brisbane/Norfolk Island flight.
2. On arrival at Sydney/Brisbane domestic terminal present your Norfolk flight boarding pass at the QANTAS transfer desk and you will be directed to the shuttle bus taking you to the International terminal.
3. For your return flight, on arrival at Sydney/Brisbane International terminal after collecting bags and clearing



ABN : 30 714 493 146

Address : PO Box 172, Norfolk Island 2899 / **Free Call :** (AUS) 1800 1400 66 / **Free Call :** (NZ) 0800 0088 10
P : (int) +6723 22502 / **F :** (int) +6723 23205 / **E :** travel@travelcentre.nf / www.norfolkislandtravelcentre.com

customs, present at the QANTAS transfer desk where your luggage will be re-checked in and you will be directed to the domestic terminal shuttle bus.

For those passengers booking Virgin, REX & other carriers to connect in Sydney/Brisbane to Norfolk Island flight:

1. Note minimum connection time between your domestic and international flight is minimum two hours.
2. Passengers check-in at the domestic terminal, luggage will be checked through to Sydney/Brisbane only.
3. Collect your luggage at the Sydney/Brisbane domestic terminal and transfer with your luggage to the international terminal via train or TBus at your own expense.
4. Upon arrival in the Sydney/Brisbane international terminal proceed to the Qantas check-in counter for luggage check-in and your boarding pass to Norfolk Island.
5. Upon return from Norfolk Island all passengers must clear customs in Sydney/Brisbane, collect their luggage and clear quarantine. Proceed to the domestic terminal with your luggage via train or TBus (at your own expense) and check-in for your domestic flight.

Passport and Visa requirements

Since 2016 travel to Norfolk Island from mainland Australia has been classed as domestic travel. However, all flights still depart from and arrive at the international terminal.

Australian passport holders:

The Department of Immigration and Border Protection advises anyone travelling between Norfolk Island and mainland Australia will be required to identify themselves. Although passports and visas are no longer mandatory for Australian citizens when travelling to Norfolk Island from Australia, a valid passport continues to be the preferred method of identification.

- We recommend travelling with a passport if you have one, however technically photographic identification for Australian citizens such as an Australian driver's licence, will be acceptable.
- It's important you provide us with your full name as it appears on your Passport or Drivers licence to ensure your ticket matches your ID document.
- Those without a passport may experience some delays with manual customs checks
- Those travelling without a passport should also be aware that in the event of a flight diversion e.g. due to inclement weather preventing the aircraft to land on the island, the flight could be diverted to New Zealand. Those passengers without an Australian or NZ passport will not be permitted to leave the transit area at Auckland airport.

Foreign passport holders and/or those travelling via New Zealand:

- Non-Australian citizens who hold a permanent resident visa are able to travel to Norfolk Island without further visa requirements but must use a passport as your form of identification.
- Normal Australian Customs and Immigration procedures will apply when entry is made from outside Australia (including New Zealand). A passport (valid on entry and departure) is necessary and a visa may be required for some foreign passports.

For more information please check the following Border Force link:

- <http://www.border.gov.au/Trav/Ente/GoIn/Arrival/Travel-Documents-for-Entry-to-Australia>

We look forward to assisting you with your travel arrangements to Norfolk Island. Should you have any queries regarding the above information, please feel free to contact us.



ABN : 30 714 493 146

Address : PO Box 172, Norfolk Island 2899 / Free Call : (AUS) 1800 1400 66 / Free Call : (NZ) 0800 0088 10
P : (int) +6723 22502 / F : (int) +6723 23205 / E : travel@travelcentre.nf / www.norfolkislandtravelcentre.com

Disclaimer:

Wave Hospitality Group Pty Ltd trading as Norfolk Island Travel Centre acts only as agent for the client in acquiring transportation, hotel accommodations, sightseeing and other privileges, or services for the clients' benefit, and on the express condition that Wave Hospitality Group Pty Ltd shall not be responsible for any loss, accident, injury, delay, defect, omission or irregularity which may occur or be occasioned, whether by reason of any act, negligence or default of any company or person engaged in or responsible for carrying out any of the arrangements, or otherwise in connection therewith. Please note if insufficient numbers not reached for tours or in the event of poor weather conditions tour companies reserve the right to cancel tours prior to commencement. Alternative arrangements may be offered. All prices subject to change without notice.

ABN : 30 714 493 146



Address : PO Box 172, Norfolk Island 2899 / **Free Call** : (AUS) 1800 1400 66 / **Free Call** : (NZ) 0800 0088 10
P : (int) +6723 22502 / **F** : (int) +6723 23205 / **E** : travel@travelcentre.nf / www.norfolkislandtravelcentre.com